



©Eleni Shiarlis Lighting. Photo - Chris Christoforou

Tower Bridge Walkways – Illuminating one of the most famous bridges in the world was always going to be a fine balance between functionality and form. Lighting designer Eleni Shiarlis of Brighton, had just this challenge when asked to illuminate the two latticed walkways suspended between the two towers of the bridge.

Naturally Eleni had to be both sympathetic to the original design, whilst providing a purposeful lighting scheme to serve the exhibitions and special events regularly hosted on the walkways.

Remaining unobtrusive when not in use, 316 Tryka Module 3 and Module 6 MR16 colour changing spotlights are custom mounted within the struts and spars. These powerful yet small units dramatically highlight and enhance the interior of the walkways for functions.

To maximise the full flexibility and potential of the Tryka luminaires each Walkway is controlled by a Mode ColourStyle DMX controller.

David Wight, the Director of Tower Bridge is delighted, "The event lighting has created a range of stunning effects which exceed our high expectations and will delight our corporate and private clients whose events will be greatly enhanced. "The solution of lighting the structure instead of the space and skilfully integrating purpose built fittings within the depth of the metal beams in the bridge structure is both innovative and subtle."





Trafalgar Square Fountains - Amongst the many world renowned heritage sites of London, surely one of the most frequently visited and widely photographed is Trafalgar Square, with its elegant fountains.

As part of Greater London Council's ongoing transformation of London's historical attractions, the Grade 2 listed fountains in Trafalgar Square have been dramatically and beautifully enhanced by Tryka underwater luminaires.

Water display specialists Ustigate of Gravesend in Kent used Tryka's extensive experience in the application of submersible lighting effects, to specify 56 Tryka Mod 36 RGB IP68 stainless steel spotlights.

Working closely with main contractor Mitie Engineering, these luminaires are employed to highlight the many classical statues and features within the fountains, as well as creating stunning colour changing water cascades and plumes that can reach a height of 80 feet.



More water feature references include:

- Lakeside Shopping Centre, Essex, UK
Tinside Pool, Devon, UK

Beacon South Quarter, Dublin, Ireland
Four Seasons Hotel, Hong Kong



Richard Desmond's Children's Eye Centre is a recent addition to London's Moorfields Eye Hospital.

The centre was designed by Penoyre & Prasad Architects in consultation with patients, their families and staff. One of its most striking features is the south façade, which was awarded the 'Exterior project of the year' award at the Lighting Design Awards 2008. Folded aluminium louvres are suspended on a tensioned cable net to prevent direct light entering the building, whilst at the same time creating fascinating abstract imageries.

Lightscape Projects - part of the Light Projects Group - were responsible for the lighting design, installation and programming. A total of 64 IP67 Tryka Strip Modules in different lengths were selected for the project.

Each and every Tryka LED luminaire featured the use of oval optics in order to best distribute the light output and offer limitless colour-changing opportunities. This effect can be seen as the colours wave their way across the length of the building.

Light Projects Group's Director Roger Beckett enthused: "The Tryka LED linear units were perfect for this installation as they fitted the narrow aperture between the window and suspension wires perfectly, due to their narrow profile. In addition they had an ideal light distribution and control for this kind of lighting scheme."





The Palace Exchange is a new retail development in the centre of Enfield.

A key feature of the 160,000 square feet area is the Enfield Word Wall, which - measuring at approximately 120m - imposes over the northern side of the development and features passages of conversations from the town's past and present. Hoare Lea Lighting specified the lighting, with the concept of backlighting the wall behind the large text whilst simultaneously illuminating the wall with LED projectors from across the street. Specialists, Architen Landrell were drawn in to carry out the entire installation.

A total of over 100 IP67 Tryka Strip Module Optic in a variety of lengths were used on this project, with 27 Tryka IDS-4s - the Intelligent Drive System capable of running large numbers of LED fixtures with a wealth of pre-built functions - used to power and drive the units.

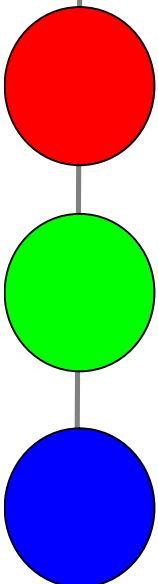
"The Tryka LED Strips are fully IP rated, a true install and forget! The IDS-4 Intelligent Drive System is such a versatile driver with many different options but with a simple user interface." Christopher Rowell, Architen's Lighting Division Project Manager.



More retail references include:

Bluewater Shopping Centre, Kent, UK
 Harrods Department Store, Various UK sites
 Fleur De Fau Shopping Centre, France

House of Fraser, Numerous UK sites
 Pucci Store, Saudi Arabia
 Bolton Market Hall, Bolton, UK





M-Club - One of the first projects Tryka were involved in, the M-Club is an innovative project highlighting the capability of the original Tryka RGB linear system.

The design and specification was put together by Tryka Managing Director, Chris Rolph and Phil Soltys, owner of PSD Electronics in Cornwall.

Each window uses two 36 LED Strip Module extrusions, one top and one bottom to give bright saturated colours. Each window has a silver film and a sealed backing to create a fully sealed 'light-box'. In order to offer maximum control and scene setting options every window has been given a unique DMX address.

With zero failures since its original installation in 2002 the only maintenance has been a dust down of the strips and a new DMX control system to further extend the colour changing options.

The total power consumption is around 1800 watts - with a lamp life exceeding 50,000 hours!



More glass facade references include:

Sentinel Building, Glasgow, Scotland
Design Museum, London, UK

Cine 11, S. Korea
Tempo, Norway

Tryka Project

Addleshaw Goddard ©Edward Ray Lighting Ltd



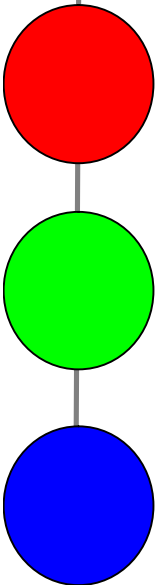
The Sentinel Building ©Andrew Lee & ©GM+AD Architects



The Design Museum ©Zumtobel



The O2 Riverwalk ©Architen Landrell



Beacon South Quarter ©Fountains Direct Ltd



TinsidePool ©Pyramid Prod. Serv. Ltd



Jewel Box ©RGB Dynamics



Mondys Club ©3 Fingers



Cargo ©Tryka LED Ltd



Mondys Club ©3 Fingers



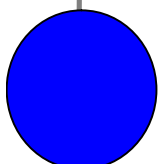
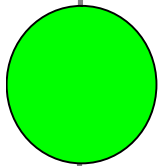
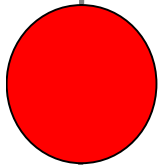
Seven ©Lumodan



Weybridge ©FlairLight



Hill View ©FlairLight



©Lighting Sensations



©Lighting Sensations



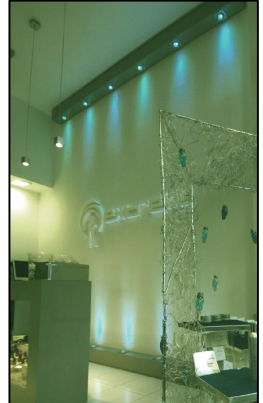
Kings Walk Shopping Centre ©I-Vision



Fleur d'Eau Shopping Centre © Philippe Graffion



Extreme Pro Beauty © Lorenzi Design



St Thomas School ©Architen Landrell



The Perse School, Cambridge ©Stephen Smith Electrical



Wookey Hole Caves ©WHC



Flow ©Chimera Electronics



Fort Regent ©LED Technology Jersey

